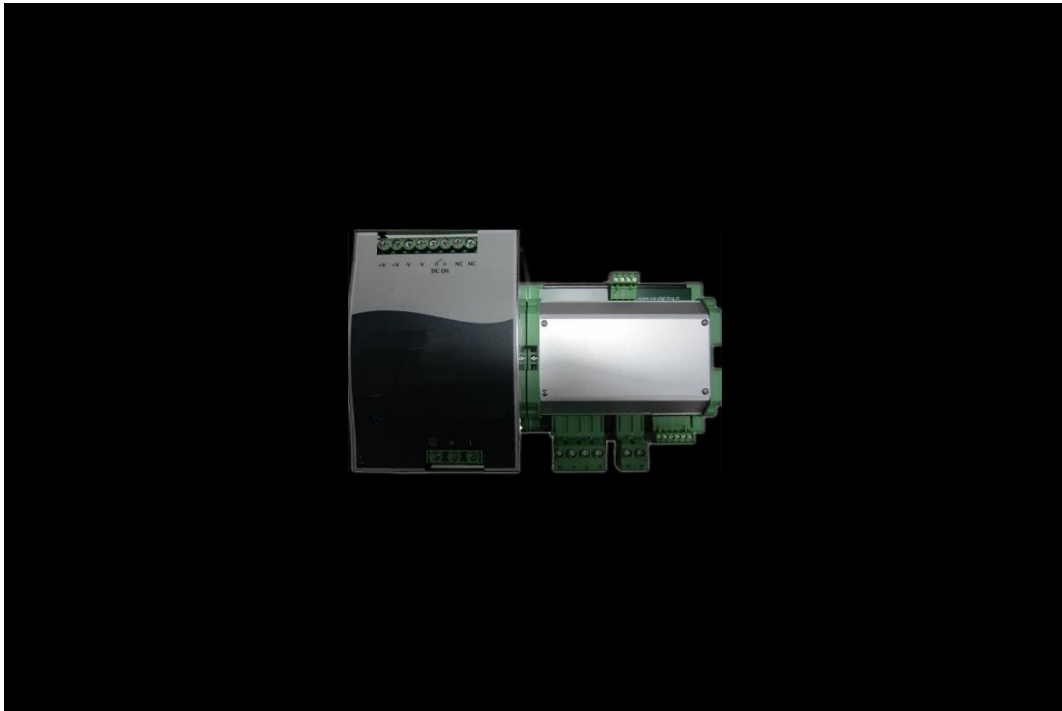


LBR II DA

Digitally controlled power supply



SUMMARY

Product summary:

The LBR II power supply is designed to control and regulate up to 35 inset or elevated LED lights. Brightness regulation is in accordance with the ICAO Annex 14 Vol II.

This system is "plug&play" just connect the input power (230V) and connect the output (4x2.5mm²) to the lights circuit. Once connected, it will immediately work.

In case of power supply or regulator failure, a dry contact relay will switch to alarm mode. Brightness regulation can be easily operated using a 4 position switch.

This system allow to obtain all necessary feature on the Helipad using a simple and small sized power supply. The LBR II is designed to be installed directly on a electrical panel or in a independent box.

<i>Design:</i>	DIN Rail Power supply for Helipad	<i>Input:</i>	90-260 VAC 50/60hz
<i>Dimension (on DIN rail):</i>	Length: 250mm Height: 180mm	<i>Power:</i>	480W
<i>Brightness regulation:</i>	10% 30% 100% 4 positions switch	<i>Standards:</i>	ICAO Annex 14, Vol II
<i>Alarm:</i>	Power supply and regulator failure		

TECHNICAL DESCRIPTION:

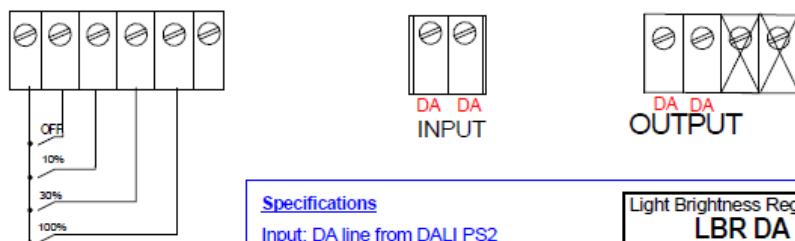
Mechanical characteristics:

<i>Fixing:</i>	Din Rail
<i>Dimension:</i>	Length: 250mm Height: 180mm
<i>Weight:</i>	3.2 kgs
<i>Temperature range:</i>	-30° to +70° (for temperature higher than 50° see derating curve)
<i>Relative humidity:</i>	20 – 95% RH (non-condensing)

Electrical characteristics:

<i>Input Supply Voltage:</i>	90-260 VAC
<i>Power (max):</i>	480W
<i>Number of light (max):</i>	35 Lights (other version available for more lights)
<i>Output:</i>	+24/48VDC // 0V // control line // control line
<i>Output recommended cable:</i>	4x 2.5mm ² or higher Recommended max. cable length: 300 meters
<i>Control Command type:</i>	1 rotary switch (100% // 30% // 10% // OFF)
<i>Alarm:</i>	Power supply failure and regulator failure (dry contact)

CONNECTION DIAGRAM



Specifications

Input: DA line from DALI PS2
Output: DA line to lights
Maximum cable length: 300m
Dimming Mode: PWM OFF/10%/30%/100%

Light Brightness Regulator
LBR DA



CH-1782 Belfaux / Switzerland
www.aerolighting.ch
Phone: ++41 26 475 42 53

The descriptions, photometric measurements and features contained in this publication are given for information only and do not constitute an engagement for our society, which reserves the right to change them without prior notification.