

HFTR Series

Inset LED light for Helipad

TLOF

FATO

Aiming point

Flight path alignment

Perimeter

Taxiway edges

ICAO

CASA

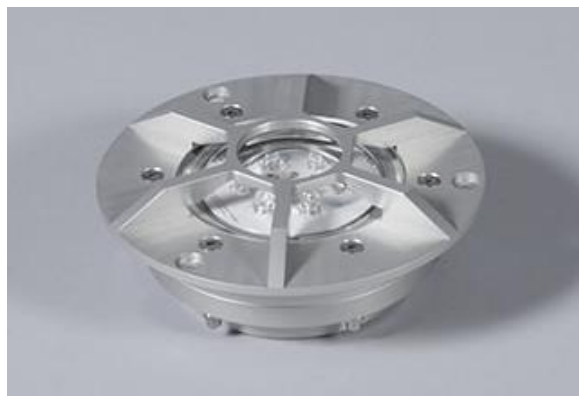
DGAC-STAC



SUMMARY

Product summary:

HFTR is the most robust version of the HFT range. This product is designed for very high solicitation. With an increased static and dynamic load capacity, the HFTR reduces the possibility of damage. This product and its forefather have been produced and are used in more than 600 helipads all around the world. It is available in a large range of colors, materials and power supplies. It is easy to install and needs no maintenance. The manufacturing quality guarantees a very long lifespan. The waterproofness has been elaborated to guarantee that no water or humidity enters. A special physical barrier guarantees that no humidity can come from the connection (WatBar). This inset LED light is very robust.



<i>Design:</i>	Inset LED Light for Helipad
<i>Material:</i>	Aluminum or Stainless Steel
<i>IP Rating:</i>	IP 68
<i>NVG Enhanced:</i>	Optional
<i>Protection:</i>	Glass covered
<i>DALI</i>	Yes

<i>Power supply</i>	24-48 VDC 6.6A or 230V with external driver
<i>Power:</i>	Max. 19W
<i>Standards:</i>	ICAO, EASA, CASA, STAC
<i>Brightness ctrl.:</i>	with LBR II DA or DALI
<i>LED Lifetime:</i>	> 80'000 hours
<i>iControl Ready:</i>	Yes

Standards summary:

Type	Color	InfraRed integrated	ICAO Annex 14 2020 TLOF	ICAO Annex 14 2020 FATO	ICAO Annex 14 2020 Alignment and guidance	ICAO Annex 14 2020 Aiming	ICAO Annex 14 2020 Taxiway edge	FAA AC 150/5390-2C 2012	FAA EB87	FAA EB98	CAA CAP437 2021	CASA CAAP 92-2 2014	EASA CS-HPT-DSN 2019	ICAO DOC 9261 & 9154	DGAC-STAC (France)	DIN EN IEC 62471:2009
HFTR-G	Green	(✓)	(✓)					(✓)	(✓)	(✓)		(✓)	(✓)	(✓)	(✓)	(✓)
HFTR -W	White	(✓)		(✓)	(✓)	(✓)				(✓)		(✓)	(✓)	(✓)	(✓)	(✓)
HFTR -B	Blue	(✓)					(✓)			(✓)			(✓)	(✓)	(✓)	(✓)
HFTR -R	Red	(✓)								(✓)			(✓)	(✓)	(✓)	(✓)
HFTR -Y	Yellow	(✓)	(✓)							(✓)						(✓)

(✓) = optional

TECHNICAL DESCRIPTION:

Mechanical characteristics:

<i>Body material:</i>	Aluminum anodized or Stainless steel Borosilicate glass
<i>Diameter:</i>	150mm
<i>Height above ground:</i>	13 mm
<i>Weight:</i>	1.2 kg
<i>Temperature range:</i>	-35° to +50°C
<i>Protection Class:</i>	IP68
<i>Water / Humidity; Insulation</i>	WatBar – Physical insulation between the “connection room” and the light

Optical characteristics: (visible)

<i>Technology:</i>	High Power LED
<i>Light source:</i>	Aerolighting HFTR6 LED engine
<i>Available color:</i>	Green/White/Yellow/Blue/Red/Infrared
<i>Intensity (White):</i>	Up to 150 cd at 0° elevation (ground level)
<i>Horizontal output:</i>	360°
<i>Intensity level:</i>	100% - 30% - 10% with LBR II DA from 5% to 100% with DALI
<i>LEDs Lifespan:</i>	>80'000 hours

Electrical characteristics:

<i>Supply Voltage:</i>	24-48 Volts DC
<i>Power:</i>	Max 18 Watts (white: 18W / other color: 8W)
<i>Brightness regulation (visible):</i>	LBR II DA DALI (fully compatible with Digital Addressable Lighting Interface)
<i>Connection:</i>	+Vdc / -Vdc / DA / DA
<i>Type of cable:</i>	4x 1.5mm2 (if DALI or LBR II DA is not used, only 2 wires are connected) Note: this light can be used only by connecting 48V without any regulation (only ON/OFF)

Aeronautical standards

ICAO Annex 14 Vol II 5 th edition July 2020	TLOF perimeter lights Final approach and take off area lights (FATO) Aiming point lights Flight path and guidance lighting system
ICAO Annex 14 Vol I 9 th edition July 2022	Taxiway edge light
EASA CS-HPT-DSN Issue 1 2019	TLOF perimeter lights Final approach and take off area lights (FATO) Aiming point lights Flight path and guidance lighting system
CASA CAAP 92-2 (2) February 2014	Final approach and take off area lights (FATO) Flight path and guidance lighting system
FAA Engineering Brief 87 Jan 2012	Perimeter light L-860HS (L) – Semi-flush heliport fixture LED
FAA Engineering Brief 98 Dec 2018	850nm Infrared for NVG Exceed L-810(L) up to 120mW/sr from 0°(ground) to 90° // max 250mW/sr
FAA AC 150/5390-2C Apr 2012	TLOF perimeter lights Landing direction lights Flight path alignment lights
DGAC-STAC SPE/STAC/SE/E/MIS/6008	TLOF perimeter lights Final approach and take off area lights (FATO) Flight path and guidance lighting system (certificate number: 2017-059/060/061/062/063/064/065/075/076/077/078HEL)
DGAC-STAC Version 4	Mechanical resistance on glass (up to 10 tons)
DIN EN IEC 642471 :2019	Safety of lamp system (for Infrared part)
IEC 60598-1 :2020	Ingress protection class dust/liquids

ORDERING CODE

HFTR 150 – G – AL – X – N

Type	Color	Material	Infrared
HFTR 150	-G: Green -W: White -Y: Yellow -B: Blue -R: Red	-AL: Aluminum -IN: Stainless Steel Stainless steel 1.4404, or 1.4435	- N: No infrared -IR: with infrared

RELATED PRODUCTS



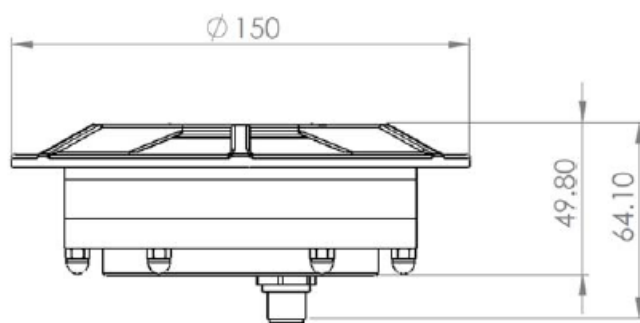
8" adapter ring (install HFTR light into standard 8 inches base)



150mm shallow base (HXX Base)

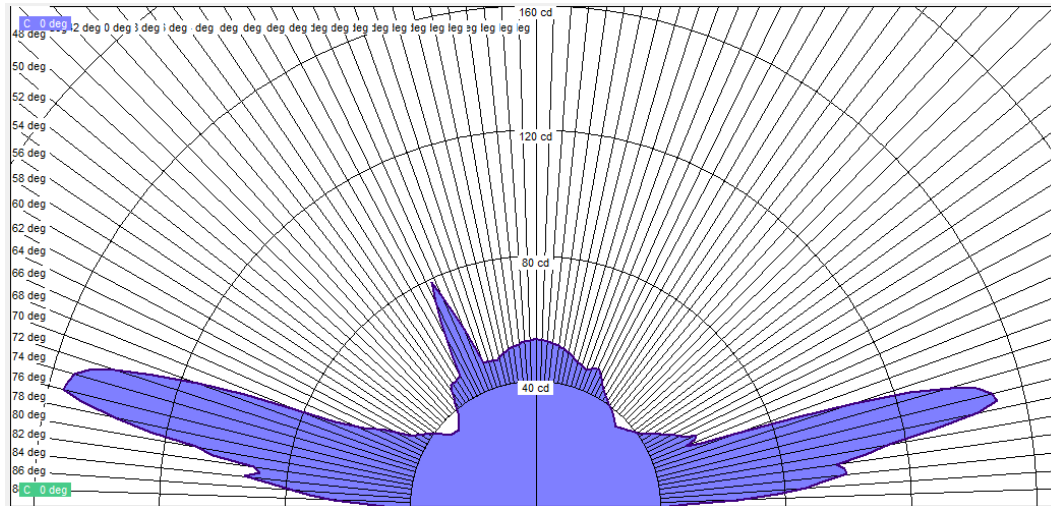
- External IP67 110-230 Volts driver
- External IP67 6.6A Driver
- LBR II DA brilliancy control central power supply

DRAWING

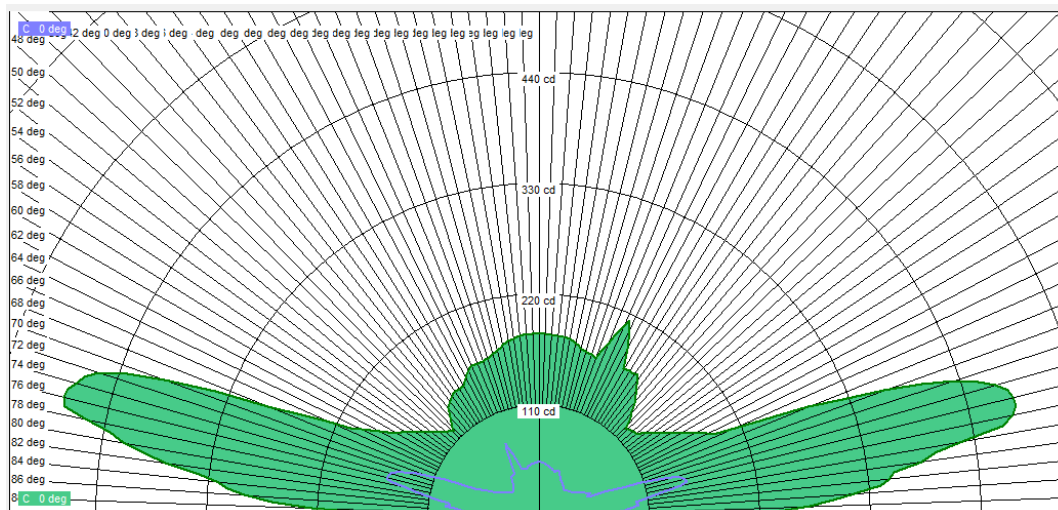


PHOTOMETRIC DATA

ICAO – Green



ICAO – White



The descriptions, photometric measurements and features contained in this publication are given for information only and do not constitute an engagement for our society, which reserves the right to change them without prior notification.